

PART OF THE NW 1/4, SEC. 17, T.5N., R.1W., S.L.B. & M.  
TERRACE PINES SUBDIVISION

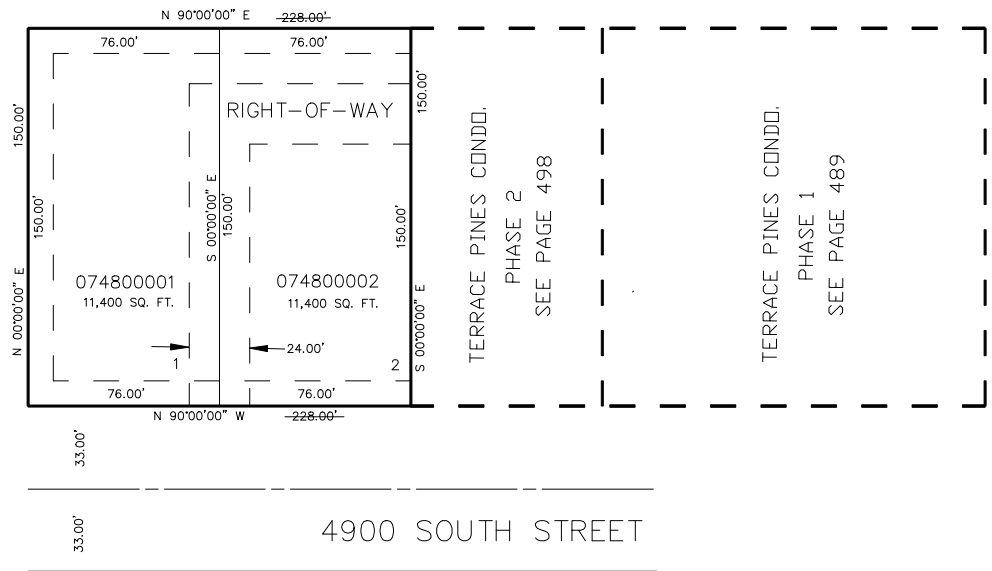
TAXING UNIT: 24

IN WASHINGTON TERRACE CITY

SCALE 1" = 40'

SEE PAGE 67

SEE PAGE 67



SEE PAGE 67

SEE PAGE 67

FOR COMPLETE ENG DATA SEE  
ORIGINAL DEDICATION PLAT IN  
BOOK 40, PAGE 89 OF RECORDS.

10' UTILITY & DRAINAGE EASEMENTS EACH  
SIDE OF PROPERTY LINES AS INDICATED  
BY DASHED LINES EXCEPT AS OTHERWISE  
SHOWN.